

DYNEX PUMP FOR LOW VISCOSITY FLUID

PF 1300 AND PF 4300 FROM DYNEX

- High quality fix displacement «checkball» type piston pump
- Specially designed for offshore and subsea applications
- Extremely applicable for low viscosity fluid
- Max operating pressure 1040 bar



Fixed displacement checkball pumps are compatible with a variety of water-based and other low-lubricity fluids. Bi-directional shaft rotation provides constant direction of output flow regardless of drive shaft rotation.

MAINTENANCE-FREE DESIGN

The single fluid checkball design uses the pumped fluid for internal bearing lubrication. This eliminates the potential for fluid cross-contamination, possible in other designs with isolated lubrication. It also avoids the cost of a lubrication circuit.



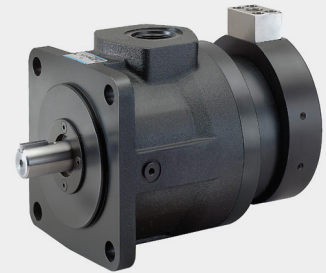
RELIABLE HIGH PRESSURE

Individual piston check valves provide long service life and greater volumetric efficiency, especially at high pressures and with low-lubricity fluids.

The check valves take the place of a valveplate in other pump designs. With no rotating sealing surface, checkball pumps are resistant to wearing and scoring.

PF SERIES PUMPS

Pump model:	cm ³	Maximum pressure (bar):	Maximum rpm:
PF1300 series pumps:			
PF1301	0,79	560	1800
PF1303	1,05	560	1800
PF1305	1,32	560	1800
PF1308	1,73	560	1800
PF1315	2,20	560	1800
PF1318	2,88	560	1800
PF1320	3,35	560	1800
PF1300 series pumps - high pressure:			
PF1301H	0,79	700	1800
PF1303H	1,05	700	1800
PF1305H	1,32	700	1800
PF1308H	1,73	630	1800
PF1315H	2,20	700	1800
PF1318H	2,88	630	1800
PF4300 series pumps:			
PF4303	5,43	560	1800
PF4304	7,67	560	1800
PF4305	9,05	560	1800
PF4306	10,86	560	1800
PF4308	12,79	560	1800
PF4309	14,30	560	1800
PF4310	16,11	560	1800
PF4312	19,33	560	1800
PF4300 series pumps - high pressure:			
PF4303H	5,43	1040	1800
PF4304H	7,67	830	1800
PF4305H	9,05	700	1800
PF4306H	10,86	700	1800
PF4308H	12,79	700	1800
PF4309H	14,30	700	1800
PF4310H	16,11	700	1800
PF4312H	19,33	700	1800
Stainless steel design:			
PF4303-20	5,43	560	1800
PF4304-20	7,67	560	1800
PF4305-20	9,05	560	1800
PF4306-20	10,86	560	1800
PF4308-20	12,79	560	1800
PF4309-20	14,30	560	1800
PF4310-20	16,11	560	1800
PF4312-20	19,33	560	1800
Stainless steel design - high pressure:			
PF4303H-20	5,43	1040	1800
PF4304H-20	7,67	830	1800
PF4305H-20	9,05	700	1800
PF4306H-20	10,86	700	1800
PF4308H-20	12,79	700	1800
PF4309H-20	14,30	700	1800
PF4310H-20	16,11	700	1800
PF4312H-20	19,33	700	1800



PF 4300-20

STAINLESS STEEL SERIES PUMPS

Pump Models	Output Flow at 1200 rpm		Output Flow at 1500 rpm		Output Flow at 1800 rpm		Maximum Pressure		Rated Speed rpm	Maximum Speed rpm
	U.S. gpm	L/min	U.S. gpm	L/min	U.S. gpm	L/min	psi	bar		
PF4303	1.5	5,6	1.8	6,9	2.2	8,3	8 000	560	1200	1800
PF4304	2.1	8,1	2.7	10,1	3.2	12,1	8 000	560	1200	1800
PF4305	2.5	9,3	3.1	11,7	3.7	14,0	8 000	560	1200	1800
PF4306	2.9	11,0	3.6	13,6	4.4	16,6	8 000	560	1200	1800
PF4308	3.6	13,6	4.5	17,0	5.4	20,4	8 000	560	1200	1800
PF4309	4.0	15,1	5.0	18,9	6.0	22,7	8 000	560	1200	1800
PF4310	4.5	17,1	5.7	21,4	6.8	25,7	8 000	560	1200	1800
PF4312	5.5	20,7	6.8	25,9	8.2	31,0	8 000	560	1200	1800
PF4303H	1.3	4,8	1.6	6,2	2.0	7,5	15 000	1040	1200	1800
PF4304H	2.0	7,6	2.5	9,5	3.1	11,7	12 000	830	1200	1800
PF4305H	2.3	8,9	2.9	11,0	3.6	13,6	10 000	700	1200	1800
PF4306H	2.9	11,0	3.6	13,6	4.4	16,6	10 000	700	1200	1800
PF4308H	3.5	13,2	4.3	16,5	5.3	19,9	10 000	700	1200	1800
PF4309H	3.9	14,7	4.8	18,2	5.9	22,3	10 000	700	1200	1800
PF4310H	4.4	16,7	5.5	21,0	6.7	25,3	10 000	700	1200	1800
PF4312H	5.4	20,4	6.7	25,6	8.1	30,7	10 000	700	1200	1800

- New stainless steel design
- Single-fluid design eliminates a secondary lubrication oil circuit
- Long life with no cross-fluid contamination
- Vertical or horizontal mounting
- ATEX compliant

Dynex PF4300-20 Series pumps with NEW stainless steel option are functionally and physically interchangeable with standard models.

These pumps operate reliably at pressures to 15 000 psi (1040 bar) with a wide range of water-based control fluid.

Only the system fluid is required for internal lubrication in this single-fluid design. The result is long life with low-cost operation on wellhead control systems around the world.



NEW STAINLESS STEEL DESIGN!

PUMPS FOR DEMANDING APPLICATIONS

SUITABLE FOR SPECIAL FLUIDS
Pistons, isolated from load pressure during start-up, ride on a rotating bearing plate for long life operation with low-viscosity, low-lubricity fluids.

CONTAMINATION TOLERANT
Large flushing path for system contamination makes pumps ideal for use in dirty environments.

PRESSURES TO 20 000 PSI
Individual piston check valves provide higher volumetric efficiency, especially at high pressures and with low lubricity fluids.

BI-DIRECTIONAL ROTATION
Stock requirements can be reduced with fixed displacement pumps providing constant flow direction regardless of drive shaft rotation.

LESS WEAR, LONG LIFE
Positive-seating check valves take the place of a valveplate used in other pump designs, eliminating an inherent leak path subject to scoring.

COMPACT SIZE
Checkball design with wobble plate keyed to the drive shaft and a stationary piston barrel provides high horsepower to weight ratio.

CAVITATION TOLERANT
Outlet checks do not unseat until pressure reaches load pressure, reducing decompression shock for smooth, quiet operation.

VERTICAL MOUNTING
Bleed port assures lubrication of bearings for long life operation for applications requiring vertical mounting.

NO FLUID CROSS-CONTAMINATION
Single-fluid design with internal bearing lubrication eliminates a lubrication circuit or regular maintenance, when pumping water glycol fluids.

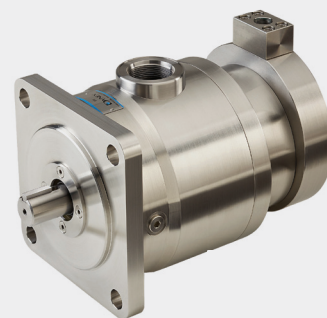
MULTIPLE-OUTLET FLOWS
Isolated pumping chambers allow Split-Flow® pumps to supply multiple-function circuits and synchronized movement without flow dividers.

Checkball pumps provide increased life and performance essential in critical applications throughout the world.

These pumps operate in extreme conditions including high pressure, special fluids, extreme temperature ranges, dirty environments, contamination, and long, difficult duty cycles.

Servi and Dynex can provide:

- Water glycol pumps for difficult-duty offshore safety control system
- High-pressure pumps for remote oil well panel systems
- Pumps for lube systems in hot, dirty mills. High-pressure and multipleoutlet pumps for synchronized lifting
- High-pressure pumps for tunneling and pipe jacking
- Special-fluid pumps for test-stands, machining and manufacturing systems



DYNEX P LOW VISCOSITY FLUID PUMPS-1310-2/EN